

AIRGLE® ROOM AIR PURIFIER

OWNER'S MANUAL (MODEL: AG300)



Congratulations on your purchase, and welcome to Airgle!

Be sure to register your product at www.airgle.com to take full advantage of the support that Airgle has to offer.

© Airgle Corporation: 1170 Lincoln Avenue Unit 2 Holbrook, NY 11741 USA

CONTENTS

Contents.....	2
Important Safety Precautions.....	3
Features.....	5
Packing Contents.....	6
Content List.....	7
Operating Instructions.....	8
Airgle® AG300 Control Panel.....	8
Remote Control Function	9
Replacing the Remote Control Battery.....	10
Airgle® Mobile Application.....	10
Download the app.....	10
Get started with the app.....	12
Add the Airgle® AG300 device to your app.....	13
Control the Airgle® AG300 device from the app using Intelligent Product Control.....	15
Control multiple Airgle devices from the app using Intelligent Product Control.....	17
Use the automation features.....	19
Filter Replacement.....	23
Limited Warranty.....	25
Commercial Use.....	25
What is Not Covered by this Warranty.....	25
Service.....	26
Specification Sheet.....	27

IMPORTANT SAFETY PRECAUTIONS

When using this, or any electrical appliance, basic safety precautions should always be followed – especially when children are present. These precautions include but are not limited to the following:

- The rated voltage specified on the data plate at the bottom of the device must match the local AC outlet voltage. If the rated voltage specified on the data plate on the Airgle® Air Purifier is 100-120V, it may only be plugged into a 100-120V AC outlet and if the rated voltage specified on the data plate is 220-240V, into a 220-240V AC outlet.
- Always turn off and unplug the Airgle® Air Purifier when not in use.
- Do not use the Airgle® Air Purifier outdoors.
- Do not expose to water or rain to reduce the risk of electric shock.
- Do not immerse the Airgle® Air Purifier in water or splash water on it.
- Do not operate the Airgle® Air Purifier near an open flame.
- Do not obstruct the air inlet or air outlet of the Airgle® Air Purifier.
- Do not let liquids or objects enter the air inlet or air outlet.
- Do not plug in or unplug the machine when your hands are wet.
- Do not unplug by pulling on the power cord, please be sure to grasp and pull the plug rather than pulling on the power cord itself.
- Do not run the cord under carpeting. Do not cover the cord with throw rugs, runners, or similar coverings.
- Do not route the cord under furniture or appliances. Arrange the cord away from traffic areas and where it will not be tripped over.
- Do not use if the supplied power cord is damaged. Damaged cords must be replaced by the manufacturer, its service agent or similarly qualified persons in order to avoid a hazard.
- Disconnect the power supply from your Airgle® Air Purifier by unplugging the power cable before replacing filters, cleaning, moving or doing maintenance.
- Do not attempt to remove any part of the device except parts designated in this manual as being replaceable, such as filters.
- Do not use attachments or filters not recommended by Airgle.

- Do not attempt to repair the Airgle® Air Purifier. If your device is no longer working, contact Airgle for information on where it may be sent for repair by an authorized service facility.
- This product employs an overload protection (fuse). A blown fuse indicates an overload or short-circuit has occurred. If the fuse blows, unplug the product from the outlet. Replace the fuse as per the user servicing instructions (follow product marking for proper fuse rating) and check the product. If the replacement fuse blows, a short circuit may be present, and the product should be discarded or returned to an authorized service facility for examination and/or repair.
- This appliance should not be used by children or persons with reduced physical, sensory or mental capabilities, or lack of experience and knowledge without supervision or instruction concerning use of the appliance and an understanding of the hazards involved.
- When using in a child's room, place where the child cannot reach the device. Children should be supervised to ensure that they do not play with the device. Children should not clean or perform user maintenance without supervision.
- To reduce the risk of fire or electric shock, do not use this device with any solid-state speed control device.
- Save these instructions for future reference.
- Skin or eye damage may result from directly viewing the light produced by the lamp in this apparatus. Always disconnect power before relamping or servicing. Replace lamp with part number AF25T, manufactured by Airgle.
- This product complies with the maximum allowable concentration of 0.050 parts per million by volume (ppmv) in a 24-h period. The Health Canada Guideline 2010 recommends that the maximum exposure limit, based on an averaging time of 8 hours, is 0.020 ppmv or less when tested in a sealed, controlled room approximately 30 m³.

READ AND SAVE THESE INSTRUCTIONS

FEATURES

AG300

The Airgle® Room Air Purifier (AG300) is built to provide 5ACH* in rooms of 155 sq. ft. It is equipped with cHEPA, activated carbon and Titanium Pro® technologies that remove airborne pollutants, such as dust particles, odors, second-hand smoke, bacteria, viruses, allergens and VOCs. The AG300 safely removes harmful pollutants down to 0.003 microns with an efficiency of 99.999%.

* ACH stands for air change per hour. An air change is when the entire volume of air in a room is processed through the air purifier. 5ACH means that in one hour of operation the entire volume of air in the room is purified 5 times. In a 310 sq. ft. room, the ACH would be 2.5.

Summary of Features

- H14 grade cHEPA ultra fine filtration technology to capture 99.999% of ultra-fine pollutants and pathogens down to 0.003 microns in size
- Titanium Pro® PhotoCatalytic Oxidation TiO2 Technology to destroy organic pathogens
- Activated Carbon remove a wide range of chemicals and odors including VOCs, ammonia, formaldehyde, benzene, common household odors, pet odors and more
- Maximum Clean air delivery: 100cfm
- 100% pressure-sealed technology
- Ultra-quiet design
- Air quality monitor
- Filter life monitor
- Infrared remote control
- Night mode
- ARB ozone free safety certification
- US energy star qualified
- iOS and Android mobile app

PACKING CONTENTS

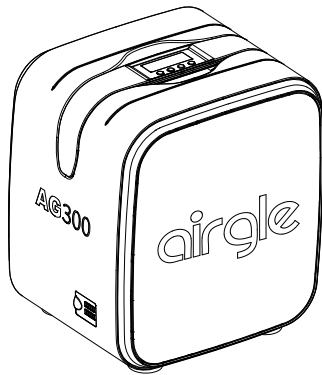
To unpack your new Airgle® Room Air Purifier (AG300), follow the instructions below.

- 1. Remove the Airgle® Room Air Purifier from the packaging.
- 2. Do not throw the original box and packaging away. Keep it in case you need to transport the device again sometime in the future.
- 3. Check the components received against the content list to make sure you have all the parts.
- 4. Check the device and all the components for damage. If the device or any of the components show damage from shipping, contact your local dealer.
- 5. For your future convenience, record the model information here. Model information can be found on the name plate located on the bottom of your device.

Model Number	Purchase Date	QR Code

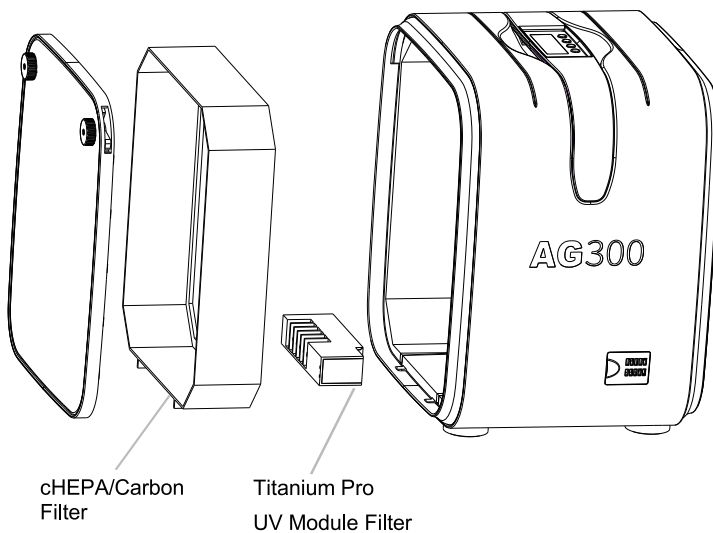
CONTENT LIST

1. Airgle® Room Air Purifier

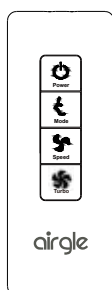


2. Two Preinstalled Filters (already installed in the air purifier)

- a. cHEPA/Carbon 2-in-1 Filter
- b. Titanium Pro® UV Module Filter



3. Remote Control



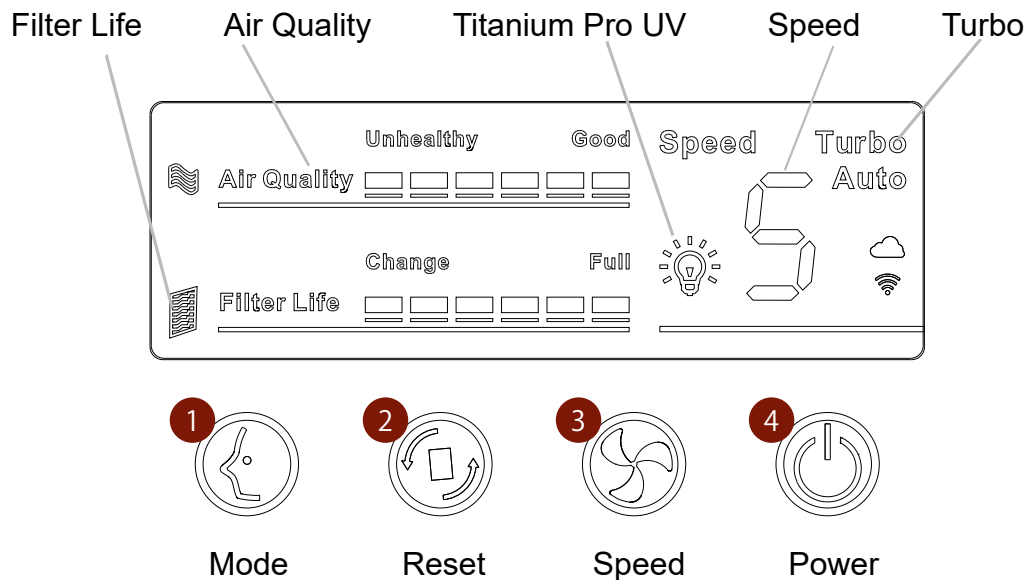
4. Owner's Manual

OPERATING INSTRUCTIONS

Below are the general operating instructions for your new Airgle® Room Air Purifier (AG300).

AIRGLE® AG300 CONTROL PANEL

The control panel on the Airgle® AG300 allows you to operate the air purifier and monitor the status of the machine.



1. Mode

The mode button can be used to cycle the Airgle® Room Air Purifier through its different modes. With the air purifier powered on, press the Mode button once. The air purifier will cycle through manual mode, automatic mode and sleep mode.

- Manual Mode:** The air purifier will run according to the parameters set manually by the user using the speed button (3).
- Auto Mode:** The air purifier will run in automatic mode. This means that the air speed will automatic adjust based on the air quality sensed by the air purifier.
- Sleep Mode:** The air purifier will turn off the LCD backlight and adjust the fan speed to "1".

With the air purifier powered on, press and hold the Mode button for more than 5 seconds to active the Titanium Pro® UV module. The light bulb icon will light up indicating that the Titanium Pro® UV module is on. To turn the Titanium Pro® UV module off, press and hold the Mode button for more than 5 seconds again.

2. Reset

The reset button can be used to reset the filter life status of the Airgle® Room Air Purifier after the filter has been replaced (filter replacement instructions included in this manual).

3. Speed

The speed button can be used to change the fan speed of the Airgle® Room Air Purifier. To change the fan speed, press the Speed button once. The fan speed will cycle accordingly among the four regular speed modes.

To use the air purifier in turbo-mode (speed 5), press and hold the Speed button for more than 5 seconds.

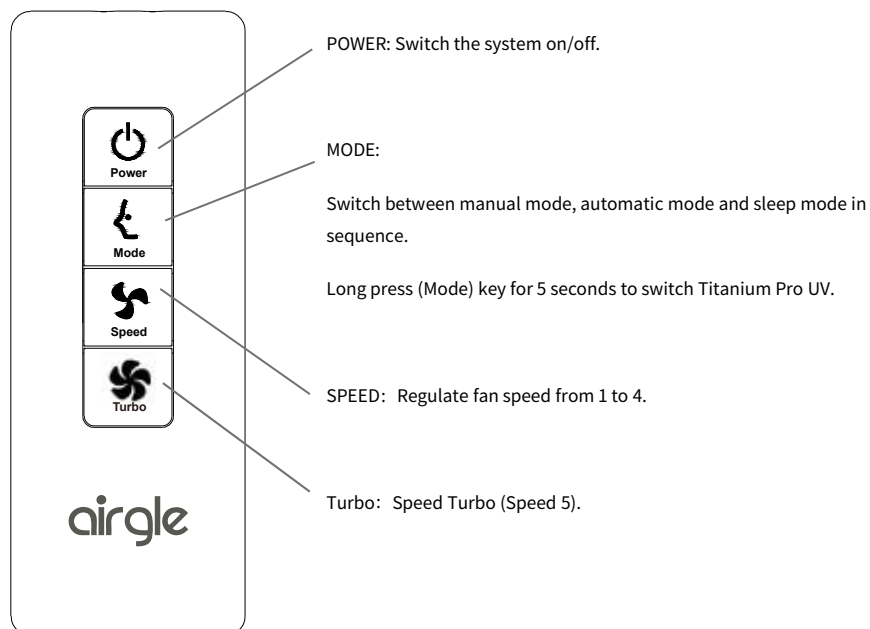
4. Power

The power button is used to turn on and off your Airgle® Room Air Purifier.

* IR

The IR sensor is used to receive signals from the remote control. You can remotely control the Airgle® Room Air Purifier's operating mode, fan speed and power on/off using the provide remote control.

REMOTE CONTROL FUNCTION DESCRIPTION



REPLACING THE REMOTE CONTROL BATTERY

1. Open the battery compartment by pressing the small lever to the side and slide the battery compartment out.
2. Remove the used battery.
3. Insert the new battery (3V battery CR2032). Be sure that the (+) and (-) are in the correct orientation.



WARNING: Chemical Burn Hazard. Keep batteries away from children.

- This Product contains a lithium button/coin cell battery. If a new or used lithium button/coin cell battery is swallowed or enters the body, it can cause severe internal burns and can lead to death in as little as 2 hours. Always completely secure the battery compartment. If the battery compartment does not close securely, Stop using the product, remove the batteries, and keep it away from children. If you think batteries might have been swallowed or placed inside any part of the body, seek immediate medical attention.
- The cells shall be disposed of properly, including keeping them away from children.
- Even used cells may cause injury.

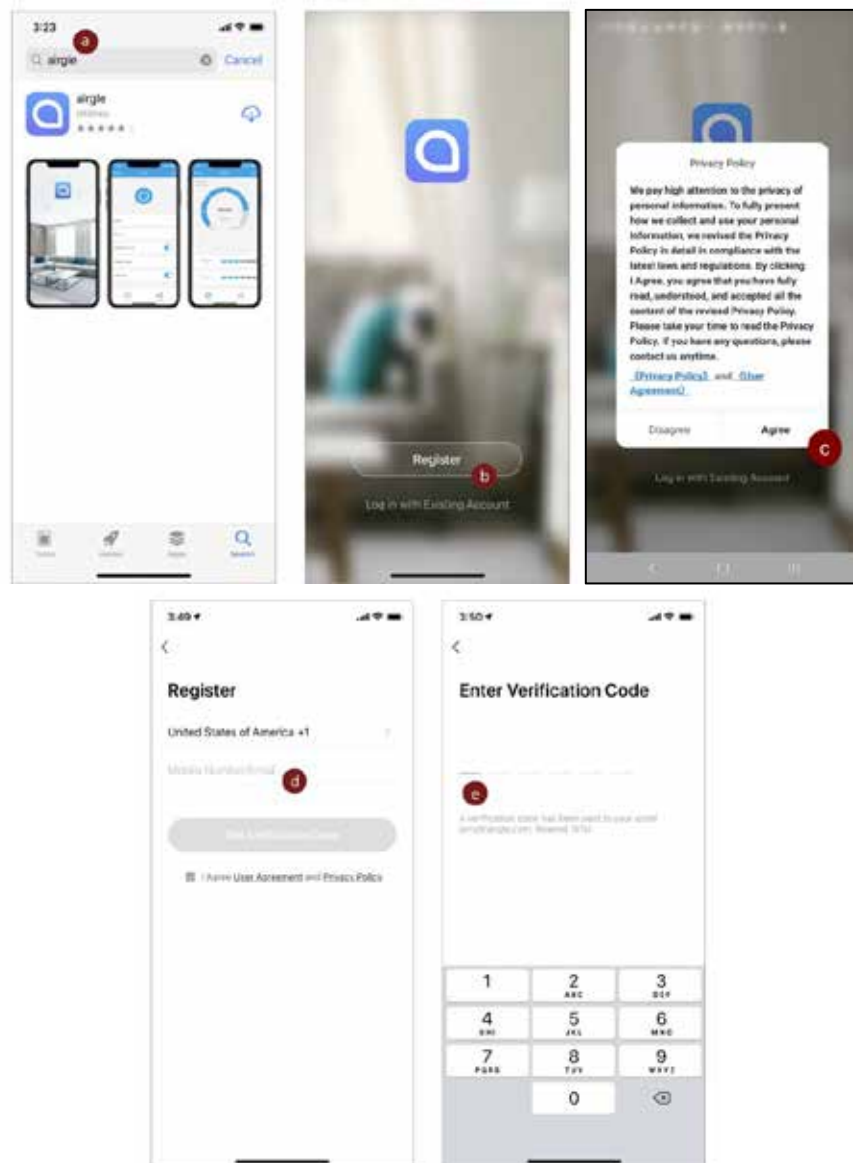
AIRGLE® MOBILE APPLICATION

The Airgle® Room Air Purifier has a mobile application with the ability to manage your Airgle® AG300 air purifier from your own mobile device. It can be downloaded on both iOS and Android platforms.

DOWNLOAD THE APP

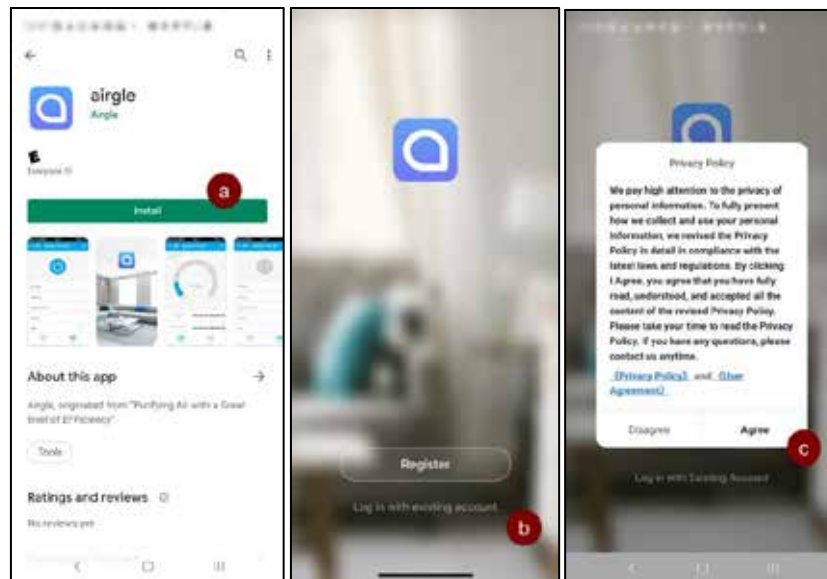
Apple devices

- a. Launch the Apple app store on your device and in the search bar, enter "Airgle" and click Search. Use the "Get" button to download the app(a).
- b. Once the app is installed, launch the app and click the "Register" button to set up your Airgle account(b).
- c. Read the Privacy Policy and click "Agree"(c).
- d. Enter your email address or phone number to obtain a verification code(d).
- e. You will be sent a 6-digit verification code(e). Enter this code into the app to confirm your registration.



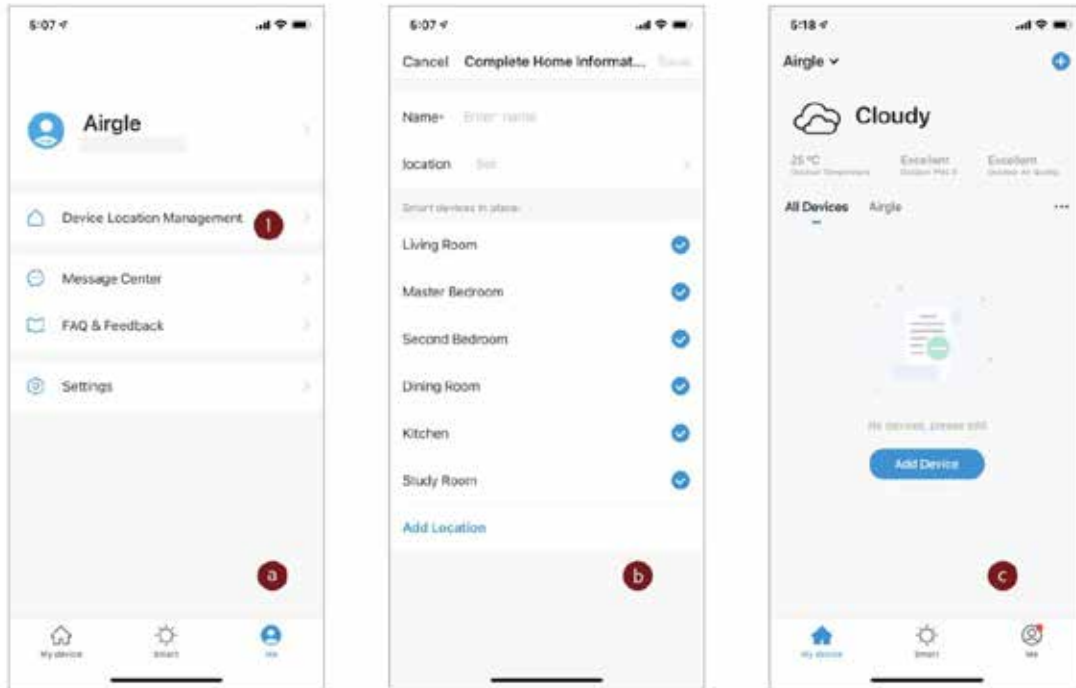
Android devices

- a. Launch the Google Play store on your device and in the search bar, enter "Airgle" and click Search. Use the "Install" button to download the app(a).
- b. Once the app is installed, launch the app and click the "Register" button to set up your Airgle account(b).
- c. Read the Privacy Policy and click "Agree"(c).
- d. Enter your email address or phone number to obtain a verification code.
- e. You will be sent a 6-digit verification code. Enter this code into the app to confirm your registration.



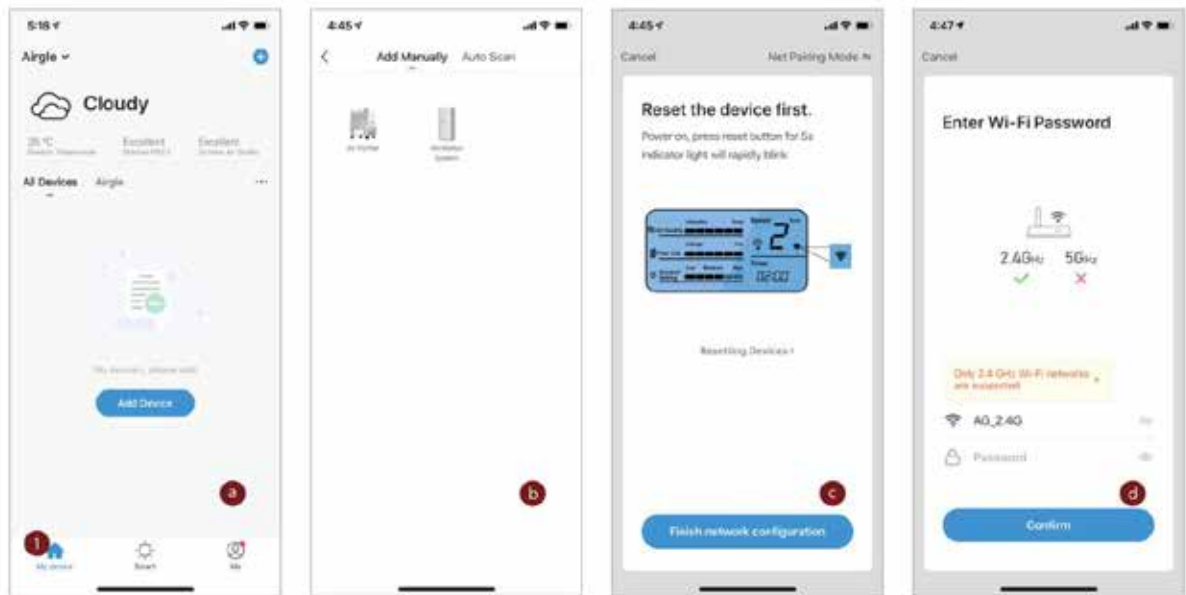
GET STARTED WITH THE APP

- a. Once fully signed into the app (a), click on the "Device Location Management" button (1) to create a location to control your Airgle devices.
- b. Give your device location a name and set your physical location(b) to get real time weather and air quality data (c). You can also choose which rooms in your location you want to place an Airgle device.
- c. Now you are ready to add devices to your location.



ADD THE AIRGLE® AG300 DEVICE TO YOUR APP

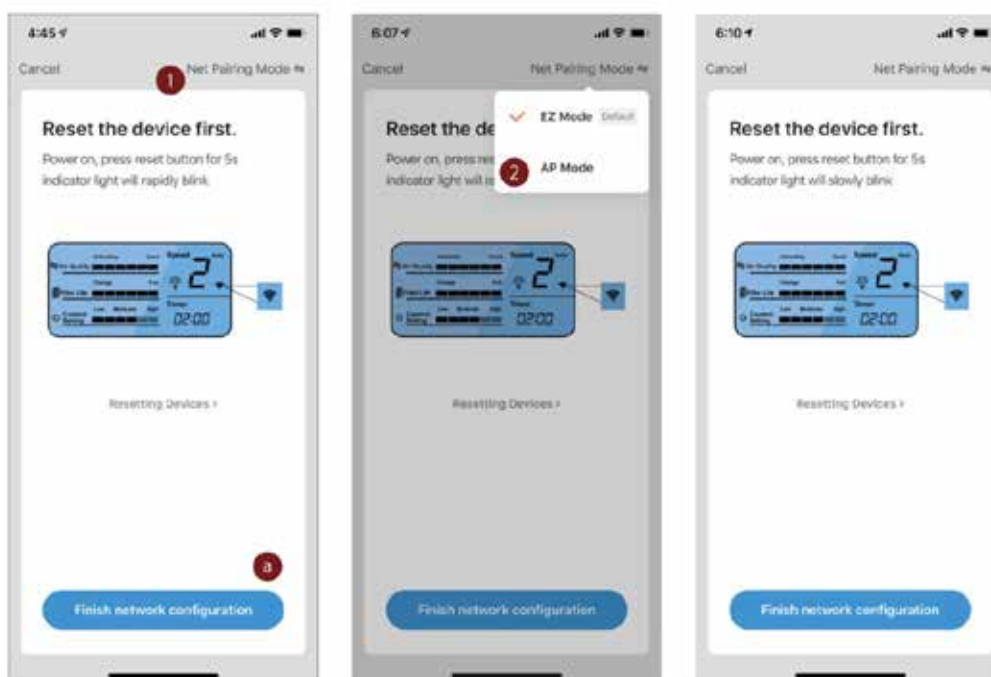
- The "My Device" home screen (1) should now have your Airgle network name in the upper left corner and should show the outdoor weather conditions under the network name. Underneath the weather information, is a list of all the devices in the network. To add a device to the network, click the "Add Device" button (a) or the "+" button in the upper right corner.
- On the Add Device screen, click on the "Air Purifier" image (b).
- Power on your Airgle® AG300 and follow the instructions on the app to connect the device to WiFi. This can be done by pressing and holding the "Reset" button on the control panel for more than 5 seconds. Your device is ready to pair indicated by blinking WiFi icon on the device's control panel (c).
- Enter the WiFi password of your network to connect your Airgle® AG300 to your network(d).



e. Add your device to advanced setting (AP Mode) (a).

1) The default networking mode is "EZ Mode".

2) If you have different router and setting, you will need to connect via AP Mode by click the "Net Pairing Mode"(1) at the upper right corner of "EZ mode" homepage to switch the networking mode (2).



3) Set the product's networking mode to correspond to the app.

f) The factory default setting is “EZ Mode”. You may switch to “AP Mode” within 60 seconds after unit is powered on.

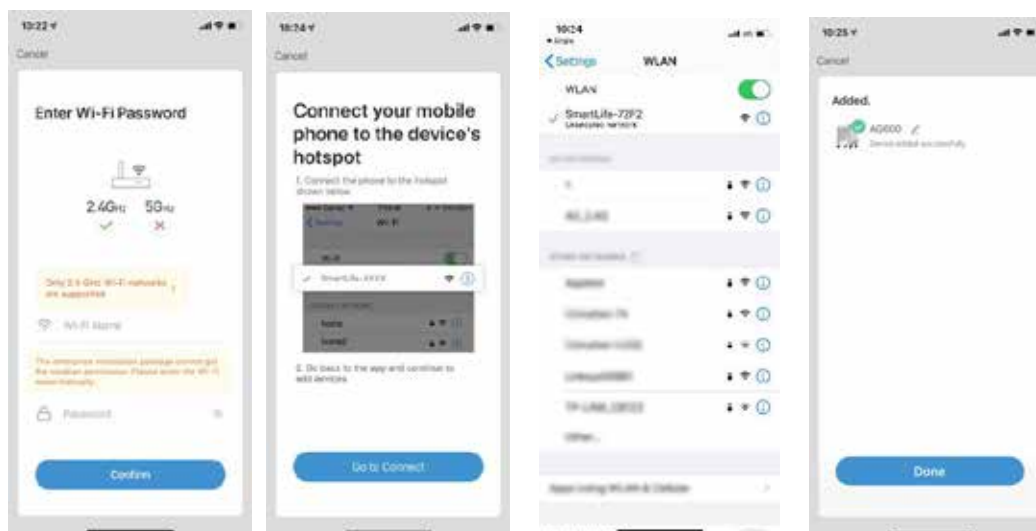
g) To switch between the modes, press "Reset" button and hold for 5 seconds, release the button after hearing the "ding ding" sound, WIFI indicator will blink on LCD.

1\EZ Mode: The WIFI indicator on the LCD display blinks at a fast pace (2 blinks per 1 second);

2\AP Mode: The WIFI indicator on the LCD display blinks at a slow pace (2 blinks every 3 seconds);

h) Connect the product in the AP mode.

Use your mobile APP to connect the mobile phone WIFI to the product hotspot. The product hotspot WIFI name should be "SmartLIFE-XXXX". The selected network then prompts to continue adding products.

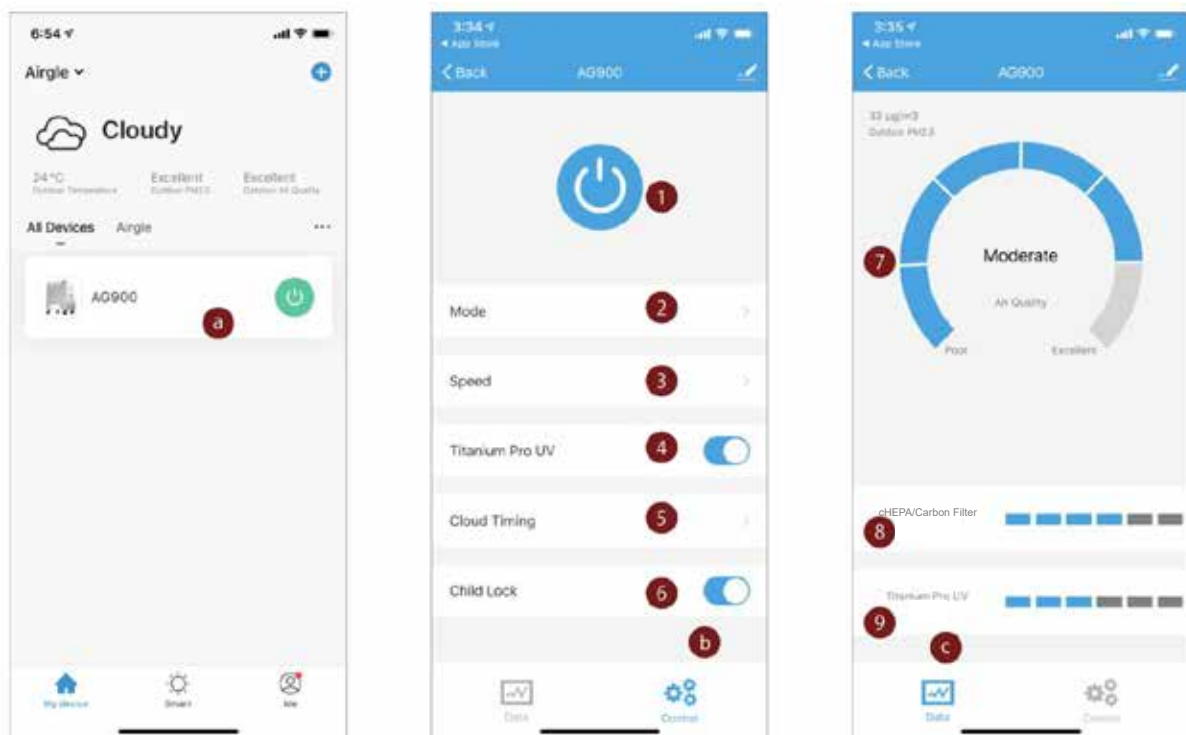


CONTROL THE AIRGLE® AG300 DEVICE FROM THE APP USING INTELLIGENT PRODUCT

CONTROL

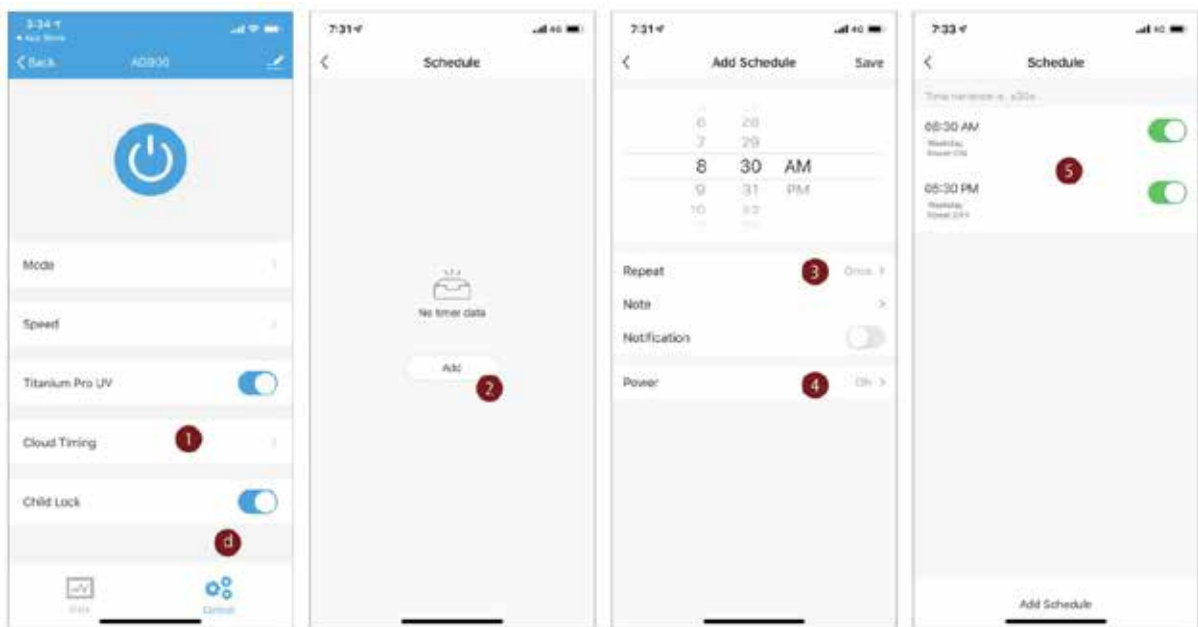
1. Now that your Airgle® AG300 device is connected to your mobile app, you can control the air purifier remotely from your phone. Start by clicking on your device name(a).
2. You can then control your device using the buttons on the Control tab (b).
 - a. Power on/off the device (1)

- b. Switch between the operating modes (Manual, Automatic, Sleep) (2)
 - c. Change the fan speed (1, 2, 3, 4, 5 - Turbo) (3)
 - d. Turn on/off the Titanium Pro® UV module (4)
 - e. Put your device on a schedule by using the Cloud Timing feature (5)
 - i. More details below (b)
 - f. Enable/disable the Child Lock safety feature (6). This disables all buttons on the control panel of your Airgle® AG300.
3. You can also view air quality data and filter life status on the Data tab (c).
 - a. This chart indicates the current air quality level surrounding your Airgle® AG300 air purifier (7).
 - b. This chart indicates the life of the CHEPA/carbon filter (8).
 - c. This chart indicates the life of the Titanium Pro® UV module (9).



4. On the Control page (d), use the "Cloud Timing" feature to put your device or group of devices on a schedule.
 - a. Select "Cloud Timing" to open the timing control interface (1).
 - b. View any existing schedules or create a new one by clicking "Add Schedule" (2).

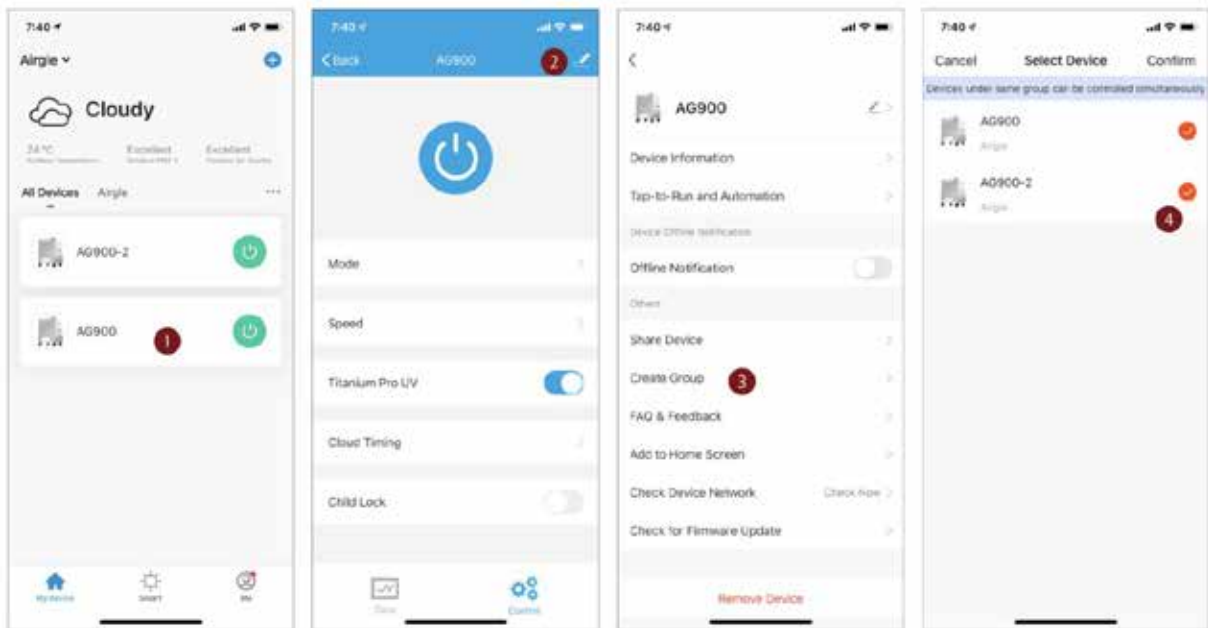
- c. Select a time to turn on your air purifier.
 - i. Select "Repeat" to set the day to be repeated in a week (3).
 - ii. Select "Power" and select the action to be performed "ON" if you want the timing to turn your device on or "OFF" if you want this timing to turn your device off (4).
- d. Repeat the above setting actions to set the shutdown time.
- e. After completing the settings, the product can be turned on and off regularly at the set times and days (5).



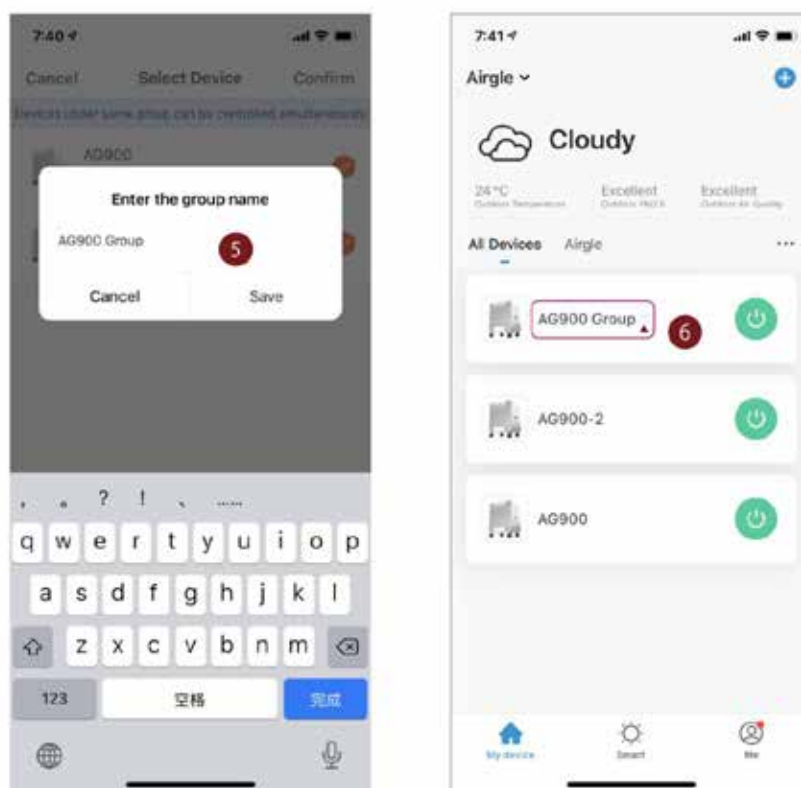
CONTROL MULTIPLE AIRGLE DEVICES FROM THE APP USING INTELLIGENT PRODUCT CONTROL

If you have other Airgle® devices in your home or office, you can control all or groups of them using the mobile application with a single click or automation.

1. On the "My Device" page, click on a connected air purifier to enter the control page (1).
2. Click the pencil icon in the upper right corner to view the More options of the product (2).
3. Select the "Create Group" button to create a group of devices (3).
4. The "Select Device" page will show a list of other connected Airgle® devices (4), select all devices you want to add to the group and click "Confirm" (5).



5. Enter a descriptive group name which will be easy to recognize on the "My Device" page.
6. You can now view the devices in the group in "All Devices". (There is a group symbol after the group name for identification) (6). By clicking on this, you can control the group of devices with a single click like powering on/off, adjusting the fan speed and other functions.

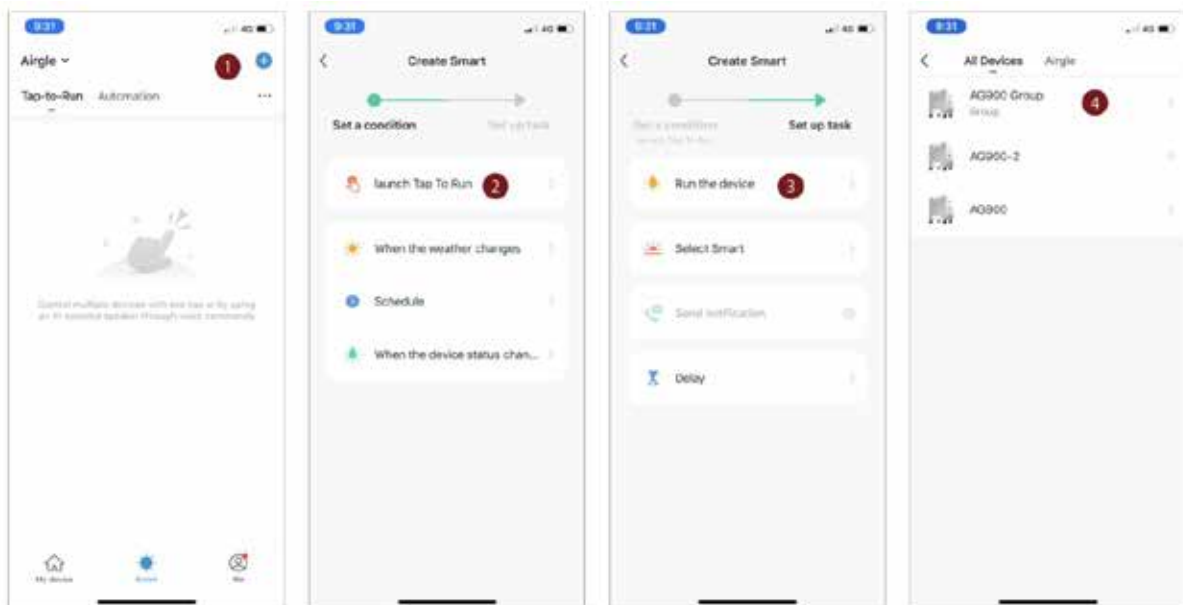


USE THE AUTOMATION FEATURES

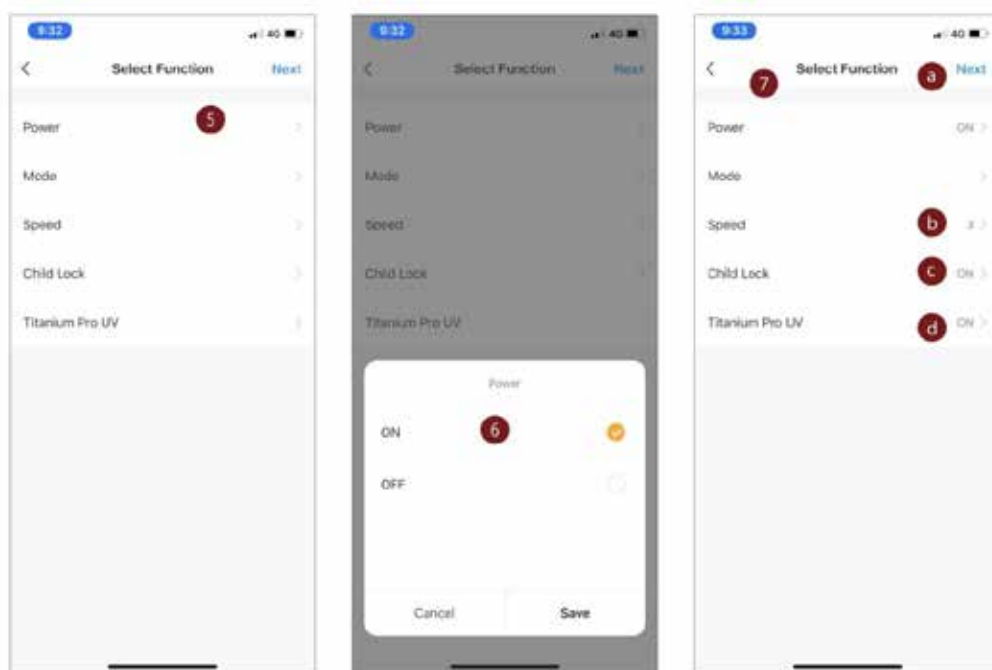
Through the mobile application, not only can you perform general product control like powering on the air purifier or changing the fan speed – but you can also control the air purifier intelligently using smart automation.

These automation features can also be used for groups of devices:

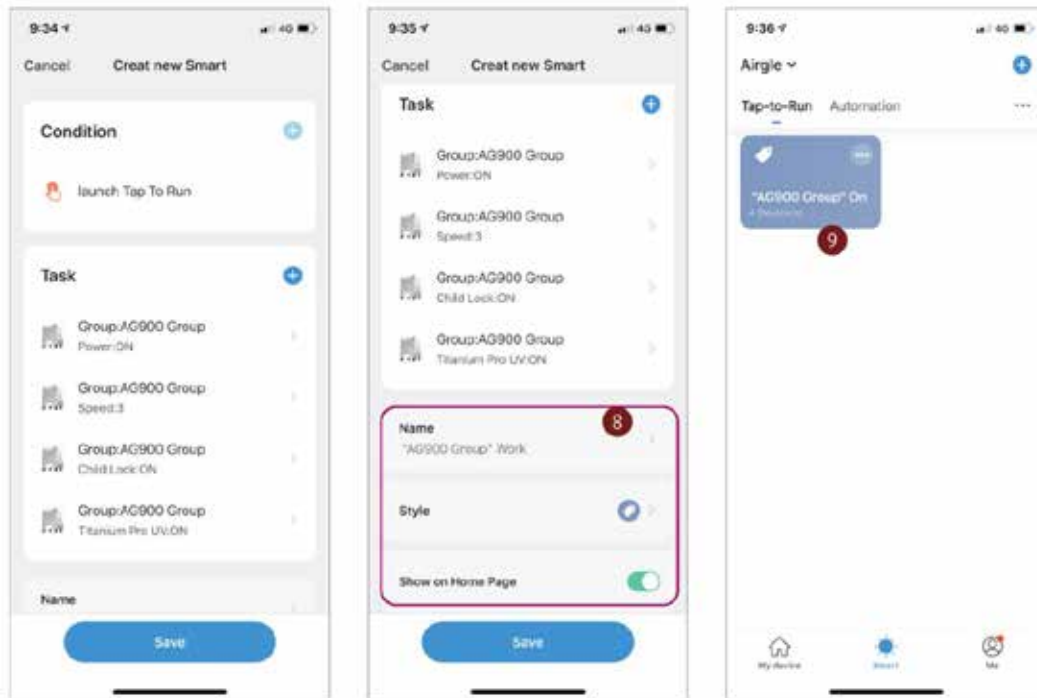
1. On the bottom of the app, switch to the "Smart" screen. This is your home page for intelligent product control and smart automation. Click the "+" button (1).
2. Click the "Launch Tap to Run" button to create a one-click shortcut for your device or group of devices (2).
3. Click the "Run the Device" button to select which device or group of devices to apply this shortcut to (3).
4. Choose a device or group of devices in the "All Devices" list (4). If you do not see your device listed, ensure you've added it to your account by following the directions in the *ADD THE AIRGLE® AG300 DEVICE TO YOUR APP* section.



5. Now that you've selected the device/group of devices for the shortcut, you can select the function to be performed using the short cut. In this example, let's choose "Power" to power on/off the device (5).
6. After choosing "Power", you are given the two options of on or off (6). Make your selection and click "Save".
7. You will then return to the Select Function screen (7) where you can choose from a multitude of options:
 - a. The "Next" button will bring you to the Conditions screen described below(a).
 - b. The "Speed" button allows you to choose a fan speed(b).
 - c. The "Child Lock" button allows you to enable the Child Lock safety feature(c). This disables all buttons on the control panel of your devices.
 - d. The "Titanium Pro UV" button allows you to turn on/off the Titanium Pro® UV module(d).

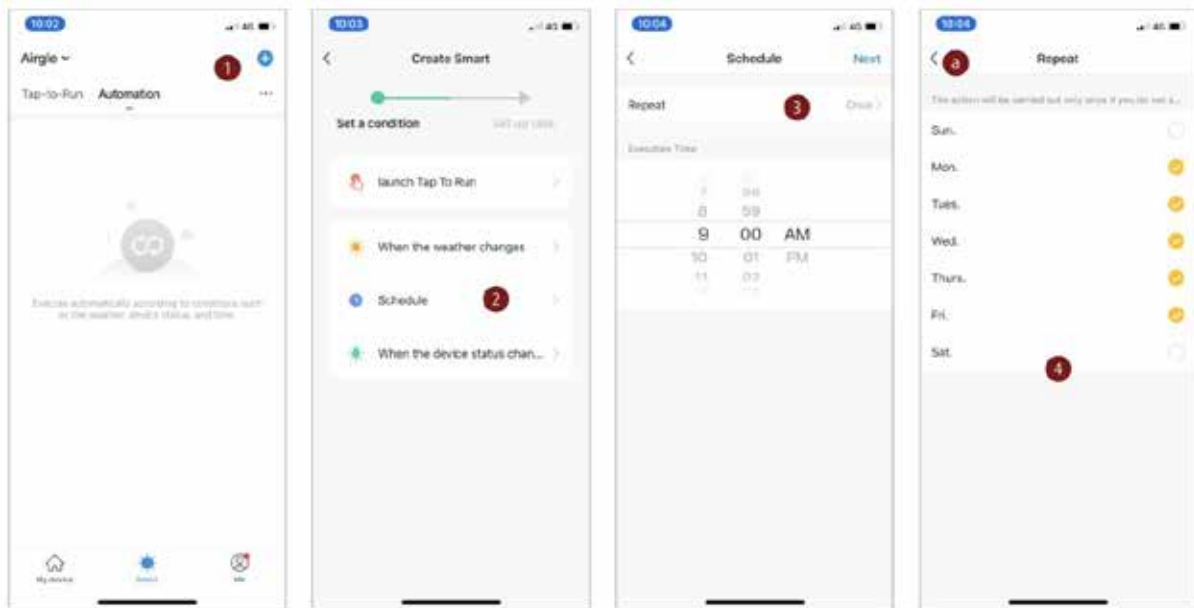


8. After selecting "Next" on the previous screen, you will then need to set the conditions under which your shortcut will run.
9. Finally, you will choose how your shortcut will be displayed on your Smart page. You can edit the name of the short cut for easy reference later, set the color of the tile, and whether it will be displayed on the Smart page (8).
10. Your finalized shortcut is now ready to view on the Smart page (9).

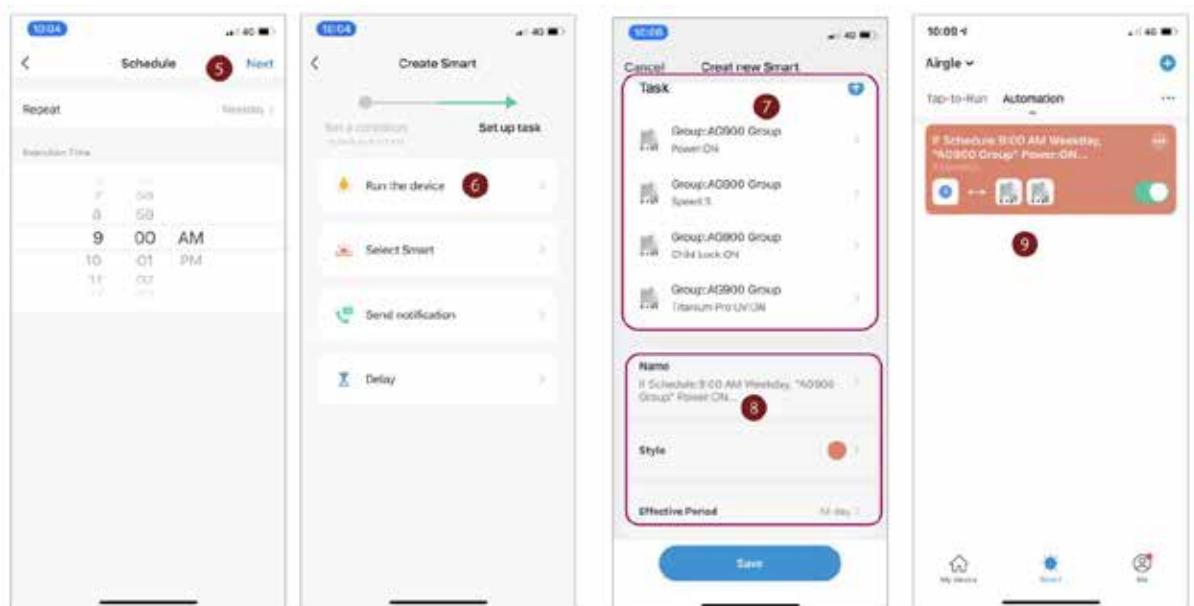


An "Automation" is a series of events that will happen automatically based on conditions you define. For example – you could create an automation to power off any devices after 9 PM.

1. Click "Automation" tab in the Smart page to get started and click the "+" button (1).
2. Click the "Schedule" button to add a schedule for the automation (2).
3. Set an execution time and click the "Repeat" button to indicate for which days to repeat the automation (3).
4. Select the days of the week you want the automation to take place (4).
 - a. Click the "<" button to return to the "Schedule" screen (a).

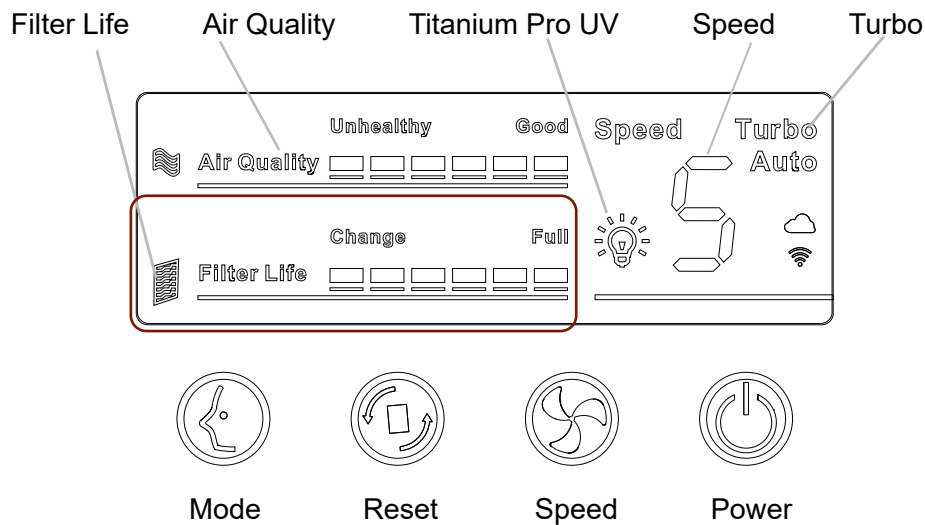


5. Click the "Next" button to continue to select the device(s) and add conditions (5).
6. Click the "Run the device" button to indicate which device or group of devices the automation should control (6).
7. Choose the condition under which the automation will run and the device(s) it will run (7).
8. Give the Automation a name (something that will help you remember its function) and choose a background color for the tile on the "Smart" page (8).
9. Finally, view the Automation created on the "Smart" page (9).



FILTER REPLACEMENT

To maintain your Airgle® Room Air Purifier, the filters should be replaced on an as needed basis. Your AG300 air purifier will let you know when it's time to replace the filters with the Filter Life indicator on the control panel.

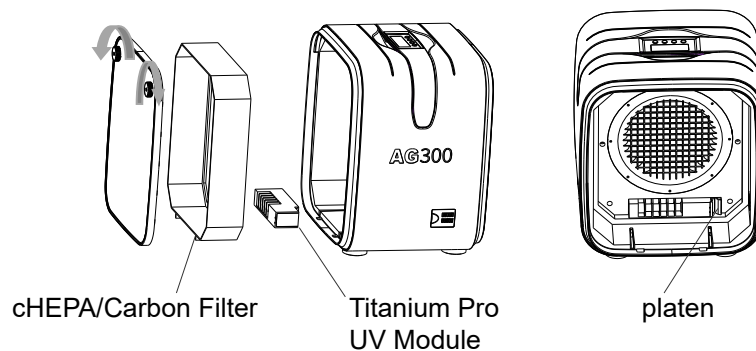


To replace the filters, follow the below steps:

1. Remove the used filter

Open the rear cover by rotating the two knobs at the upper end of the rear cover (as shown below in the figure). Next, grab the pull cord on the filter screen to take out the cHEPA/Carbon 2-in-1 filter. Press the platen as shown and take out the Titanium Pro® UV module.

Direction of rotation



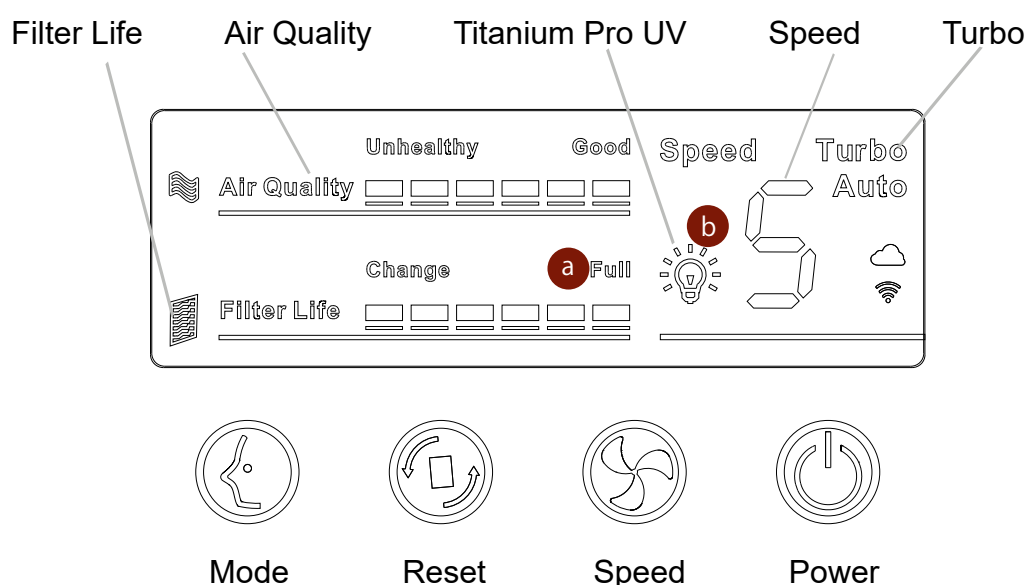
2. Install the new filter

Install the Titanium Pro® UV module and cHEPA/Carbon 2-in-1 filter into the machine in

order from the inside to the outside, paying attention to ensure that the pull cord of the filter is facing outward, and then replace the back cover. Finally, when the back cover is closed, the two knobs on the upper end of the back cover are turned in opposite directions to lock the back cover in place.

3. Reset the filter life status

After replacing the cHEPA/Carbon 2-in-1 filter, press the Reset to reset the filter life status. The filter life bar on the control panel will then be restored to the full grid (a). After replacing the Titanium Pro® UV module, the bulb on the control panel will stop flashing (b).



LIMITED WARRANTY

Airgle® Corporation (hereinafter "Airgle") warrants to the original purchaser of this product, who purchased their Airgle® Room Air Purifier from an Airgle authorized distributor or dealer:

- That this product, including all of its Airgle authorized parts, is free of defects in material and workmanship.
- That this product, if found to be defective within the stated warranty period, will be repaired free of charge to the consumer (both parts and labor) by an authorized Airgle service agent.

WHAT IS NOT COVERED BY THIS WARRANTY

This warranty does not cover the following:

- Defects resulting from damage caused by repairs, service, or alterations to the appliance performed by a service facility not authorized by Airgle.
- Defects resulting from negligence, abuse, misuse, improper or abnormal usage or maintenance of the product its parts or accessories.
- Ordinary wear or cosmetic damage (scuffs, scratches, gouges, dents, etc.) shall not be considered a defect in materials or workmanship.

SERVICE

For service under this Limited Warranty or for information you may need about the product, please visit our service website at <https://www.airgle.com.hk/warranty>

SPECIFICATION



Model Name:	Airgle Room Air Purifier (AG300)
Maximum Clean air delivery:	100cfm
Fan Speeds:	1 to 5
Noise(dB):	32 to 65
Power Consumption(With WIFI)	1.2W (Standby) to 43W
Housing Material:	PC + ABS Plastic



Precisely Pure

AIRGLE® CUSTOMER CARE

Toll-Free:(866) 501-7750

info@airgle.com

www.airgle.com